

# 107-18 CONTINENTAL AVENUE

Forest Hills, New York



## LEASING OPPORTUNITY

Busiest Block in Forest Hills

**3,980 SF - Prime Retail Storefront**

- ◆ Excellent accessibility from the NYC Subway (E, F, M, R trains) and Queens Boulevard Bus Lines (Q23 & Q64)
- ◆ Easy access to the LIRR Forest Hills Station
- ◆ 6.7 miles from Penn Station
- ◆ In the heart of Forest Hills
- ◆ Nearby Tenants - AT&T, Bank of America, Chase Bank, Dunkin Donuts, Jersey Mike's, Lorilil Jewelers

DEMOGRAPHICS	1 MILE	3 MILE	5 MILE
Population	96,604	889,081	1,987,321
Average HH Income	\$119,424	\$92,335	\$90,347

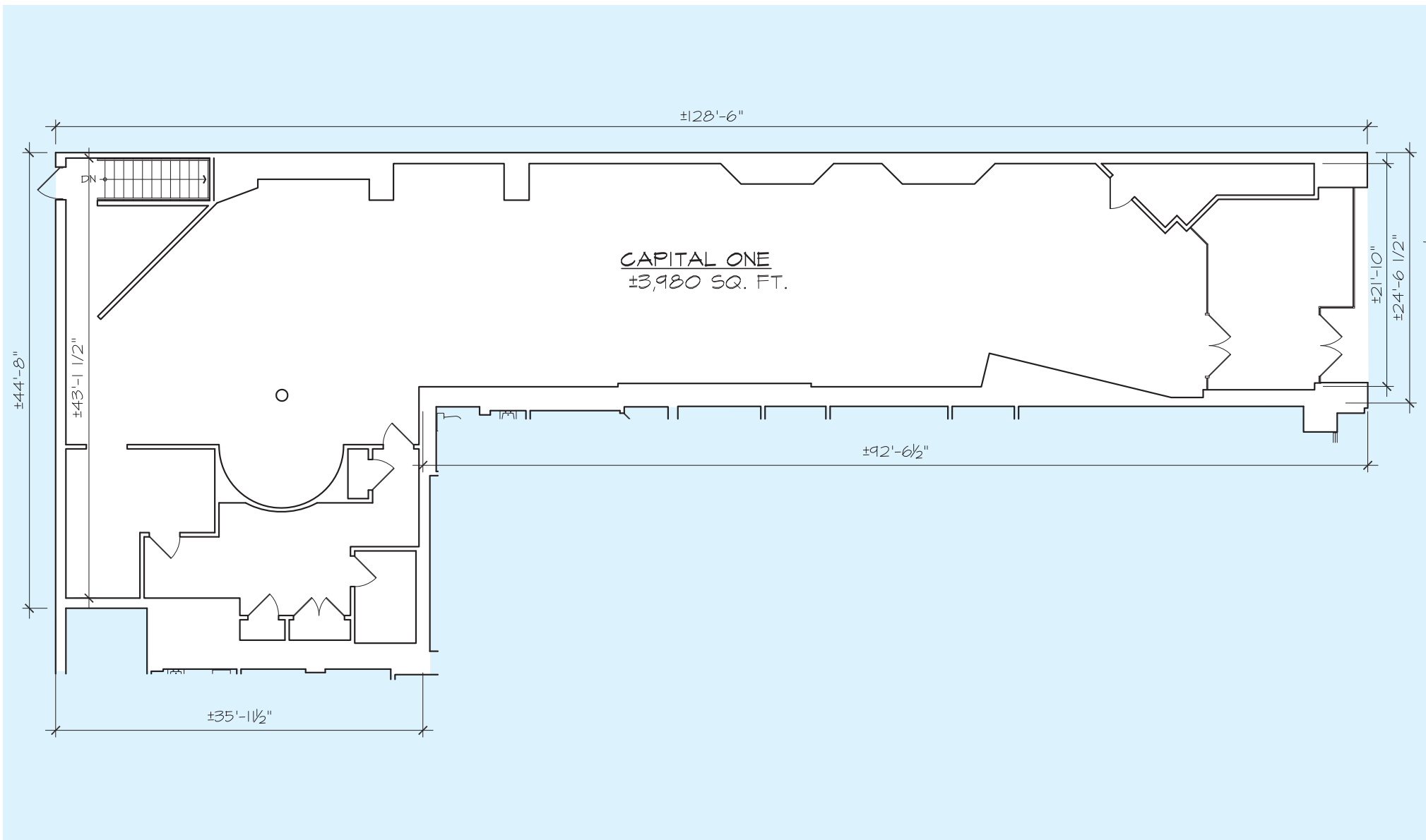


**CORD MEYER**  
DEVELOPMENT COMPANY

**MATTHEW O'GRADY** Vice President of Leasing / 718-947-7113 / mogrady@cordmeyer.com  
**PATRICIA WALSH** Leasing Representative / 718-947-7110 / pwalsh@cordmeyer.com

# 107-18 CONTINENTAL AVENUE

Forest Hills, New York



**CORD MEYER**  
DEVELOPMENT COMPANY

**MATTHEW O'GRADY** Vice President of Leasing / 718-947-7113 / mogrady@cordmeyer.com  
**PATRICIA WALSH** Leasing Representative / 718-947-7110 / pwalsh@cordmeyer.com